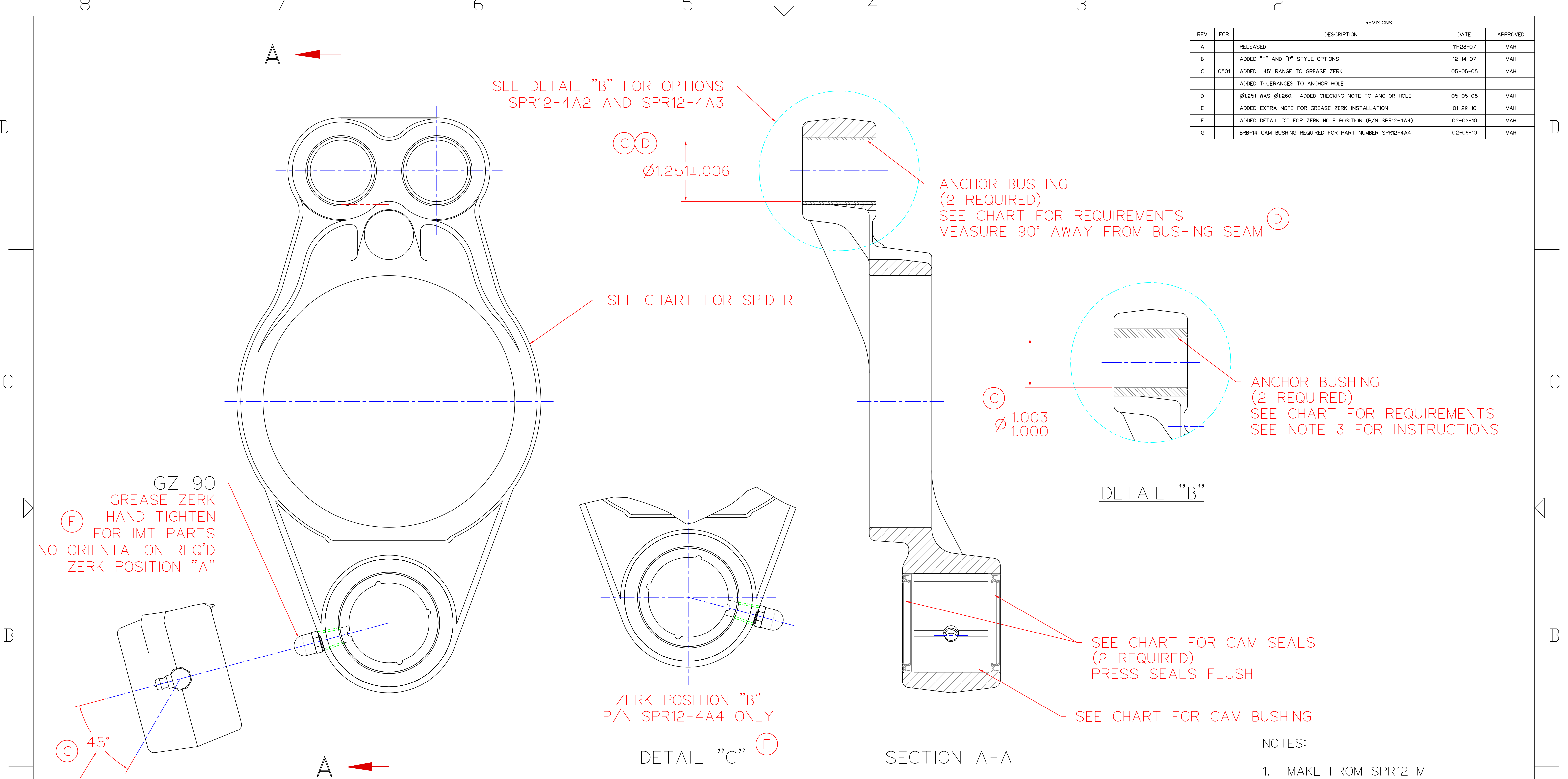


REVISIONS				
REV	ECR	DESCRIPTION	DATE	APPROVED
A		RELEASED	11-28-07	MAH
B		ADDED "T" AND "P" STYLE OPTIONS	12-14-07	MAH
C	0801	ADDED 45° RANGE TO GREASE ZERK	05-05-08	MAH
D		ADDED TOLERANCES TO ANCHOR HOLE	05-05-08	MAH
E		ADDED EXTRA NOTE FOR GREASE ZERK INSTALLATION	01-22-10	MAH
F		ADDED DETAIL "C" FOR ZERK HOLE POSITION (P/N SPR12-4A4)	02-02-10	MAH
G		BRB-14 CAM BUSHING REQUIRED FOR PART NUMBER SPR12-4A4	02-09-10	MAH



- NOTES:
1. MAKE FROM SPR12-M
  2. BREAK ALL SHARP EDGES
  3. PRESS FIT SLEEVE (P/N AS001) INTO EACH ANCHOR HOLE AND FINISH MACHINE TO  $\phi 1.000$

ASSY NO.	CAM SIZE	SPIDER	CAM BUSHING	CAM SEAL	ANCHOR BUSHING	BRAKE TYPE	ZERK HOLE POSITION
SPR12-4A	1-1/2"	SPR12-4M	NOT REQ'D	NOT REQ'D	SSB-26	T/FC	POS'N "A"
SPR12-4A1	1-1/2"	SPR12-4M	BRB-14	NOT REQ'D	SSB-26	T/FC	POS'N "A"
SPR12-4A2	1-1/2"	SPR12-4M	NOT REQ'D	NOT REQ'D	AS001	P/FT	POS'N "A"
SPR12-4A3	1-1/2"	SPR12-4M	BRB-14	NOT REQ'D	AS001	P/FT	POS'N "A"
SPR12-4A4	1-1/2"	SPR12-4M1	BRB-14	NOT REQ'D	SSB-26	T/FC	POS'N "B"
SPR12-5A	1-5/8"	SPR12-5M	BRB-26	M16HH103	SSB-26	T/FC	POS'N "A"

	DRAWN BDF	DATE 11-28-07	MTH MANUFACTURING INC.	
	CHECKED MAH	DATE 11-28-07	BRAKE SPIDER	
	GA		12.25"	
	MFG		- ASSEMBLY -	
APPROVED		SIZE D	FSCM NO.	DWG NO. SPR12-A
		SCALE		REV G
				SHEET 1 OF 1